

Wireless Setup Guide Mac OS X 2.0

Network Operations Center
Washington University in St.
Louis

Revision date: 7/1/13

1. Click on the "Airport" icon near the top-right of your screen
2. When the list of available wireless networks appears, select "wustl-encrypted-1.0" or "wustl-encrypted-2.0"



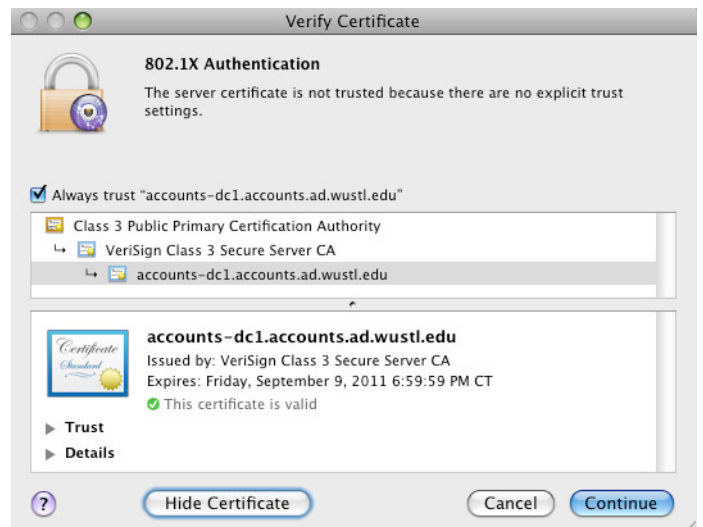
3. Enter your WUSTL-Key username and password, then click "OK"



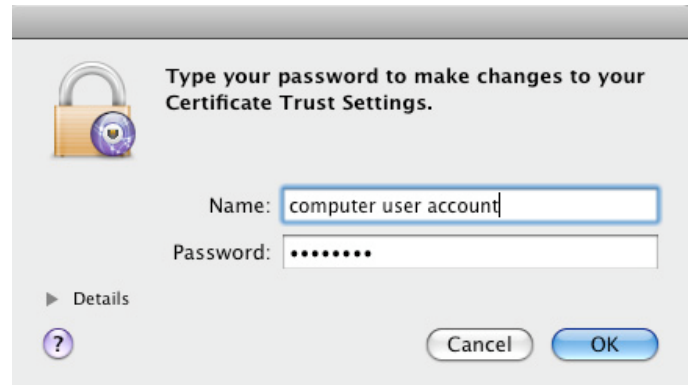
4. If asked to verify the security certificate, click on "Show Certificate"



5. Click the small button labeled "Always trust accounts-dc1.account.ad.wustl.edu" and then click "Continue"



6. When prompted for a password to save the certificate, enter the username and password for your computer's user logon account, then click "OK"



Removing old wireless configurations:

1. Open "System Preferences"
2. Click on "Network"
3. Click on "Airport"
4. Click the "Turn Airport off" button to turn your airport card off
5. Click "Advanced"
6. Remove any records of WUFI, WUFI-S, or GUESTWifi-WUSTL by highlighting them, and clicking the "-" button
7. Click on the "802.1X" button
8. Click on the "User Profiles" tab
9. Remove any records by highlighting them, and clicking the "-" button
10. Open the "Keychain Access" application
11. Click the "All items" button
12. Remove any items that contain WUFI, WUFI-S, GUESTWifi-WUSTL, Windtalker, or Aker